

SILVER SCOPE® Veterinary Videoendoscopes for use in Small and Large Animals



Unifying State-of-the-Art Technology, Ergonomics and Durability

See more, see better...

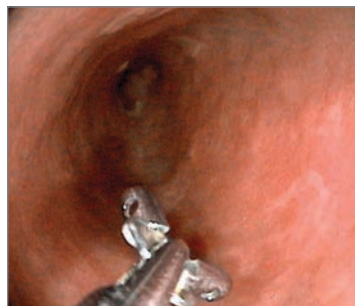
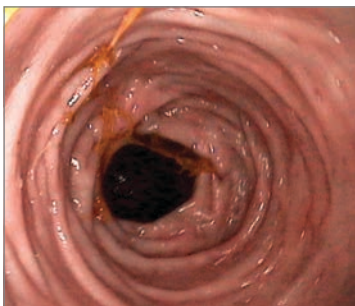
- **Digital processing technology**, high resolution CCD chips and an enhanced optical system produce images with unsurpassed clarity, brightness and depth of field
- **Dual light carriers** combined with an intelligent digital processor produce evenly illuminated images
- **8x magnification** provides large views of anatomy and pathology
- **Recessed air/water nozzles** with directional flow ensure effective distal lens cleaning

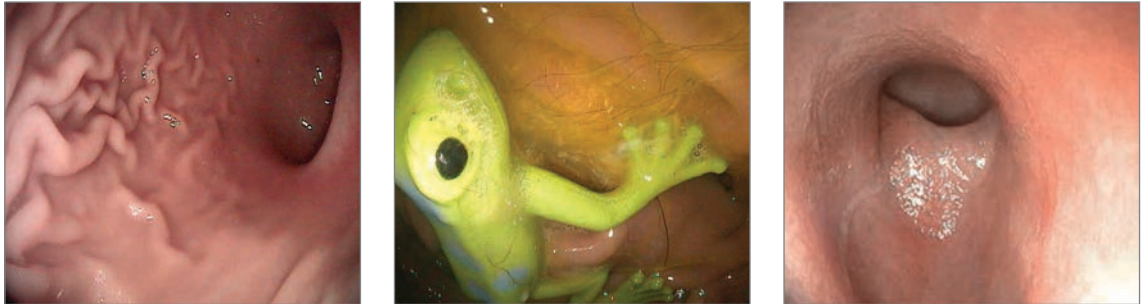
Scope every patient that needs it...

- **Extended length** facilitates duodenal examination in the largest breed dogs, gastroscopy in foals and urethroscopy in stallions
- **Reduced diameter** facilitates passage through the duodenum of cats, puppies and small breed dogs

Improve results...

- **Large working channel** accommodates bigger, more diagnostic biopsies and larger foreign body retrieval instruments
- **Deflection up to 210°** facilitates passage of the endoscope tip to otherwise “hard-to-reach” areas





Endoscopic images courtesy of Dr. Todd Tams, Veterinary Centers of America, Los Angeles, USA

Reduce fatigue...

- Newly designed, ergonomic handle ensures an easy, comfortable grip
- Insertion tube, constructed of a new “intelligent” plastic, with a special “silk-touch” surface facilitates precise guidance of the endoscope
- Programmable buttons conveniently located on handpiece allow endoscopist the option of controlling camera functions

Increase your bottom line...

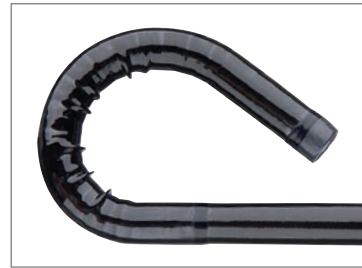
- KARL STORZ veterinary videoendoscopes use the same processor and light source as our fiberscopes and rigid telescopes, which translates into major savings for the busy vet practice with multiple endoscopy services
- SILVER SCOPE®s incorporate the latest design innovations to ensure durability
- Integrated leakage test port “pressure cap system” has been newly developed to prevent the possibility of liquid entering the endoscope
- Newly designed robust housing provides superior protection to the insertion tube
- Our optional, comprehensive ENDOPROTECT1 program will further protect your investment and minimize “down time” when repairs are necessary

Extended Length & Sleek Diameters are Ideal for Small and Large Animals

KARL STORZ SILVER SCOPE® veterinary videoendoscopes are ideally suited for numerous veterinary applications in both small and large animals. The large working channel facilitates bigger biopsies to ensure a more accurate diagnosis.

SMALL ANIMALS: Esophagogastroduodenoscopy, Colonoscopy, Tracheobronchoscopy, Rhinoscopy

LARGE ANIMALS: Laryngoscopy, Rhinoscopy, Guttural Pouch Endoscopy, Tracheobronchoscopy, Gastroscopy in foals, Urethroscopy in stallions



Indications for Gastrointestinal Endoscopy

- Dysphagia
- Regurgitation
- Chronic vomiting
- Hematemesis
- Melena
- Chronic diarrhea
- Foreign bodies
- PEG tube placement
- Dyschezia
- Masses
- Obstruction
- Weight loss
- Poor appetite
- Tenesmus

Indications for Respiratory Endoscopy

- Chronic coughing
- Chronic lung disease
- Evaluate tracheal collapse
- Persistent halitosis
- Hemoptysis
- Difficult Intubation
- Neoplasia
- Bronchoalveolar Lavage (BAL)
- Culture
- Cytology
- Sneezing
- Nasal discharge
- Epistaxis
- Difficulty or noisy breathing
- Gagging or choking
- Rubbing or scratching nose
- Facial or nasal pain
- Facial swelling
- Foreign body inhalation
- Pre-purchase exam

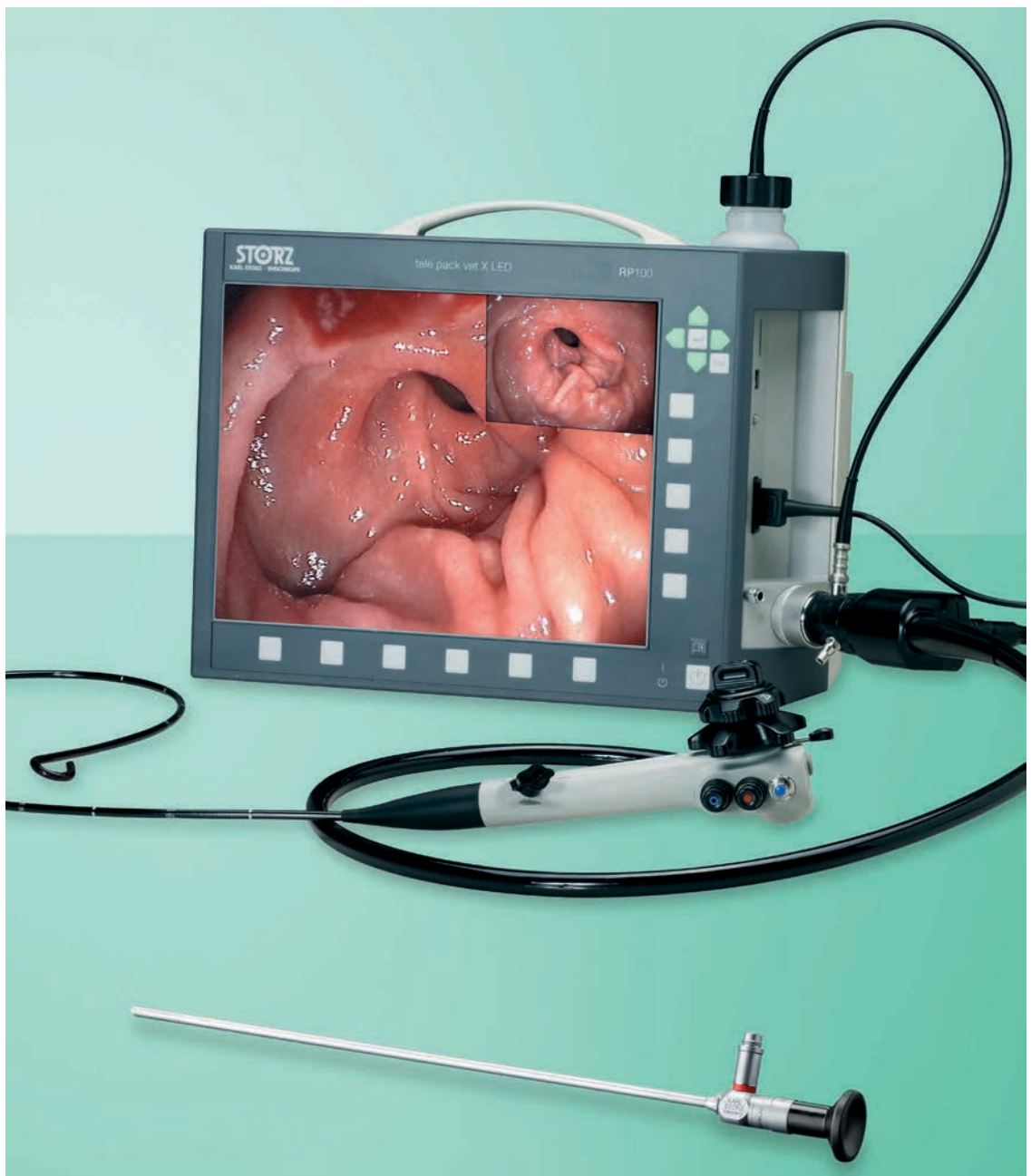
	Sheath	Working Length	Working Channel	Deflection up	Deflection down	Left/right
Multi-Purpose Videoendoscope 60714 PKS/NKS	7.9 mm	140 cm	2.8 mm	210°	100°	120°
Feline Videoendoscope 60511 PKS/NKS	5.9 mm	110 cm	2 mm	210°	100°	120°

Compatible with TELE PACK VET X LED and Other KARL STORZ Imaging Systems

Five devices, one compact unit

This high-performance, all-in-one unit integrates every component necessary for endoscopic imaging: camera, light source, monitor, insufflation pump and image capture.

The TELE PACK VET X LED is compatible with all types of endoscopes, including videoendoscopes, rigid telescopes, fiberscopes and exoscopes.



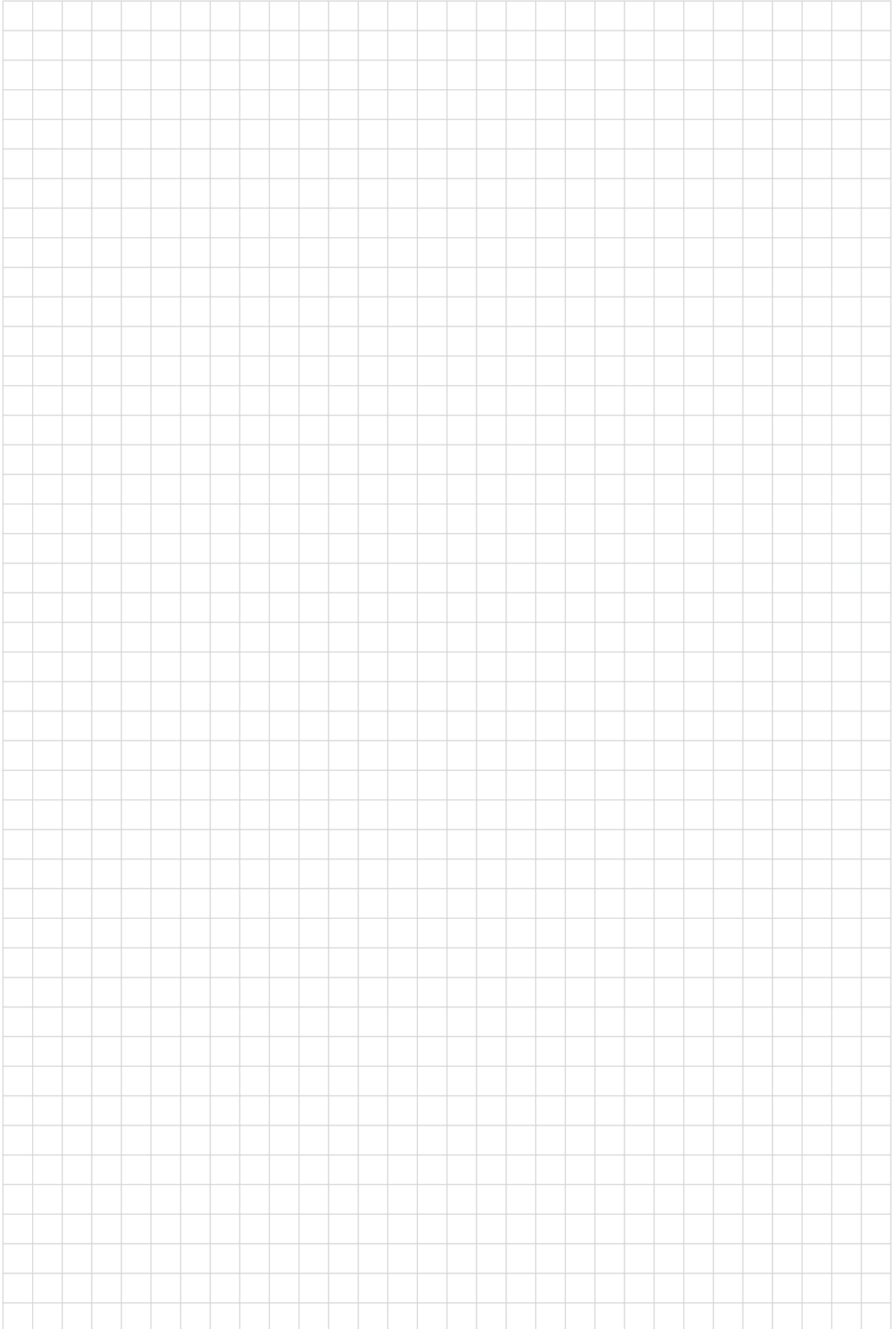
One system: ALL your endoscopy needs

Eliminating the need for multiple systems, all KARL STORZ veterinary videoendoscopes utilize the same camera and light source as KARL STORZ rigid telescopes and flexible fiberscopes, an efficient and economical solution to all your endoscopy needs.



Endoscopic image courtesy of Dr. Claire Scicluna, Equ'Institut, Paris, France

Notes





KARL STORZ GmbH & Co. KG
Mittelstraße 8, 78532 Tuttlingen, Germany
Postbox 230, 78503 Tuttlingen, Germany
Phone: +49 (0)7461 708-0
Fax: +49 (0)7461 708-105
E-Mail: vet@karlstorz.com

www.karlstorz.com